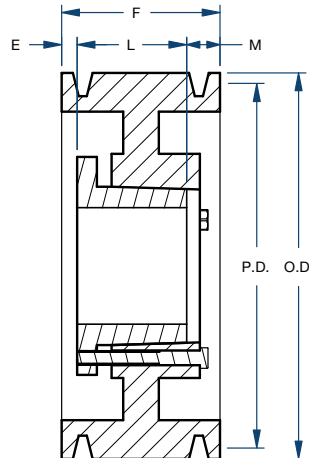


# Sheaves

## 8V SERIES 12 GROOVE/QD



BLACKSTAR®



Type A

Part Number	Bushing	Bore Range	Type	Diameter (in)		Dimensions (in)				Weight less Bushing (lbs)
				Pitch	Outside	E	F	L	M	
12-8V1250M	M	2 – 5-1/2	A	12.30	12.50	2-11/32	13-7/8	6-3/4	4-25/32	195.0
12-8V1320M	M	2 – 5-1/2	A	13.00	13.20	2-11/32	13-7/8	6-3/4	4-25/32	230.0
12-8V1400M	M	2 – 5-1/2	A	13.80	14.00	2-11/32	13-7/8	6-3/4	4-25/32	250.0
12-8V1500M	M	2 – 5-1/2	A	14.80	15.00	2-11/32	13-7/8	6-3/4	4-25/32	268.0
12-8V1600M	M	2 – 5-1/2	A	15.80	16.00	2-11/32	13-7/8	6-3/4	4-25/32	296.0
12-8V1700M	M	2 – 5-1/2	A	16.80	17.00	2-11/32	13-7/8	6-3/4	4-25/32	341.0
12-8V1800M	M	2 – 5-1/2	A	17.80	18.00	2-11/32	13-7/8	6-3/4	4-25/32	345.0
12-8V1900N	N	2-7/16 – 5-7/8	A	18.80	19.00	3/16	13-7/8	8-1/8	5-9/16	352.0
12-8V2000N	N	2-7/16 – 5-7/8	A	19.80	20.00	3/16	13-7/8	8-1/8	5-9/16	385.0
12-8V2120N	N	2-7/16 – 5-7/8	A	21.00	21.20	3/16	13-7/8	8-1/8	5-9/16	400.0
12-8V2240N	N	2-7/16 – 5-7/8	A	22.20	22.40	3/16	13-7/8	8-1/8	5-9/16	435.0
12-8V2480N	N	2-7/16 – 5-7/8	A	24.60	24.80	3/16	13-7/8	8-1/8	5-9/16	460.0
12-8V3000P	P	2-15/16 – 7	A	29.80	30.00	1/4	13-7/8	9-3/8	4-1/4	495.0
12-8V3550P	P	2-15/16 – 7	A	35.30	35.50	1/4	13-7/8	9-3/8	4-1/4	572.0
12-8V4000P	P	2-15/16 – 7	A	39.80	40.00	1/4	13-7/8	9-3/8	4-1/4	700.0
12-8V4450P	P	2-15/16 – 7	A	44.30	44.50	1/4	13-7/8	9-3/8	4-1/4	825.0